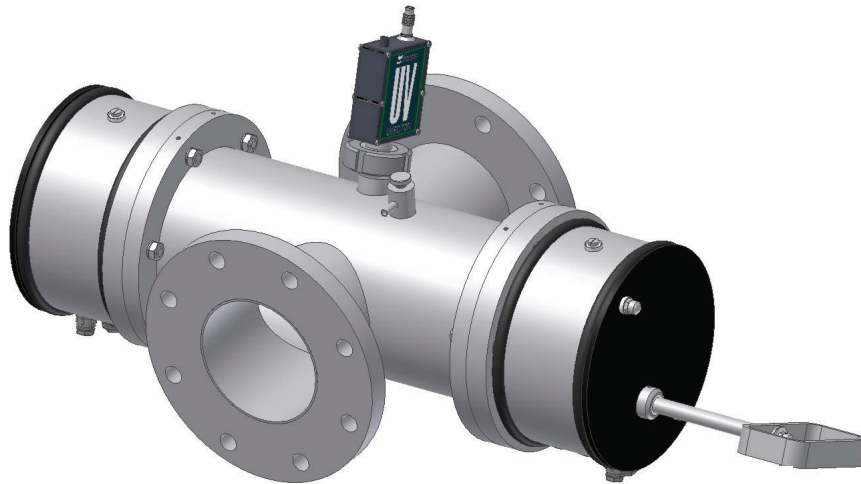


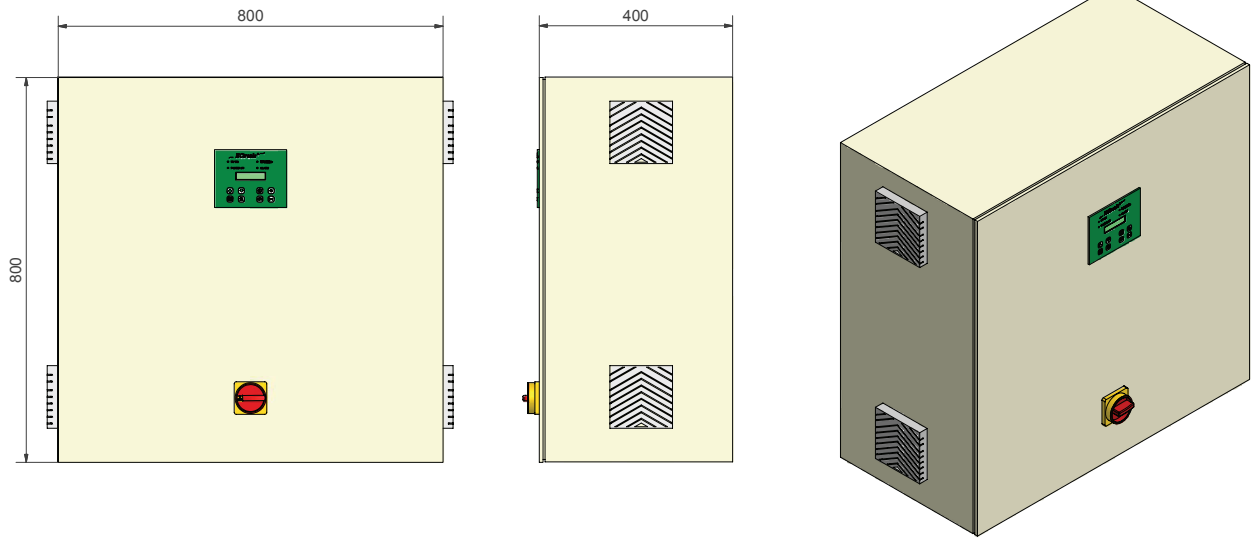
## Technical Specifications bersonInLine 150 ST



### Specifications:

• Material	:	SS 316L, according to AISI	
• Internal finish	:	Ra <sub>max</sub> 0.8 µm	
• Connections	:	NW125 DIN2576 PN10	- 5" ANSI 150 lbs.
• Degree of protection	:	IP 54	- NEMA12
• Dimensions H x W x D	:	See layout drawing	
• Weight dry	:	52 kg	- 115 lbs.
• Weight wet	:	62 kg	- 137 lbs.
• Lamp type	:	B2020H bersonMultiWave®	
• Number of lamps	:	1	
• PT100	:	Yes	
• UV-sensor	:	Yes, type UVector MPI	
• Manual cleaning			
• Drain tap	:	Yes	
• Air relieve valve	:	Yes	
• Nominal pressure	:	10 bar	- 145 PSI
• Test pressure	:	15 bar (30 minutes)	- 218 PSI

## Technical Specifications bersonInLine 150 ST



### Specifications:

• Material	: Painted steel		
• Colour	: RAL 7032		
• Degree of protection	: IP 54	-	NEMA12
• Dimensions H x W x D	: 800 x 800 x 400mm	-	31.5 x 31.5 x 15.7 in.
• Weight	: 95 kg	-	209 lbs.
• Cable Cabinet - Chamber	: 5m	-	16.4 ft.

### Electric:

• Voltage	: 230V / 400V, 3L+N	-	480V 3L
• Frequency (Hz)	: 50	-	60
• Connected power	: 2.4 kW (±5%)		
• Safety door switch	: Yes		
• EC-tronic <sup>+</sup> control system	: Yes		
• Energy control			

### Options:

• Stainless steel cabinet SS304	: 800 x 800 x 300mm	-	31.5 x 31.5 x 11.8 in.
• Different voltage (check berson for available alternatives)			

## Layout drawing BersonInLine 150 ST

