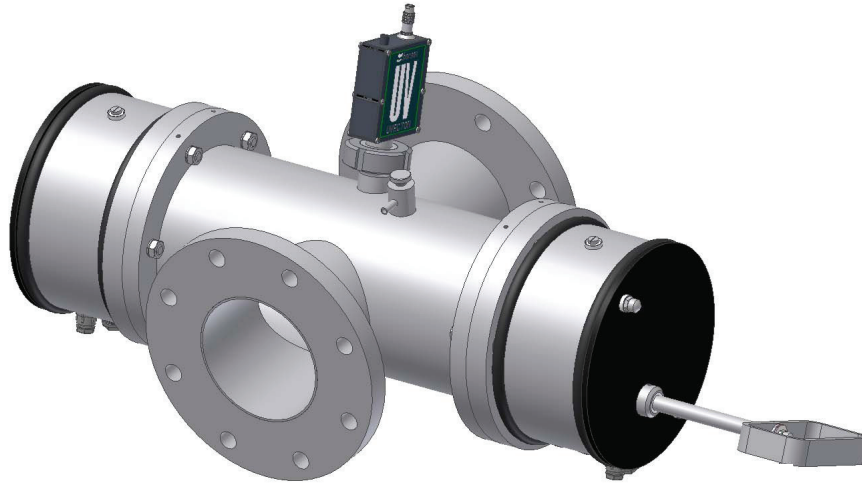


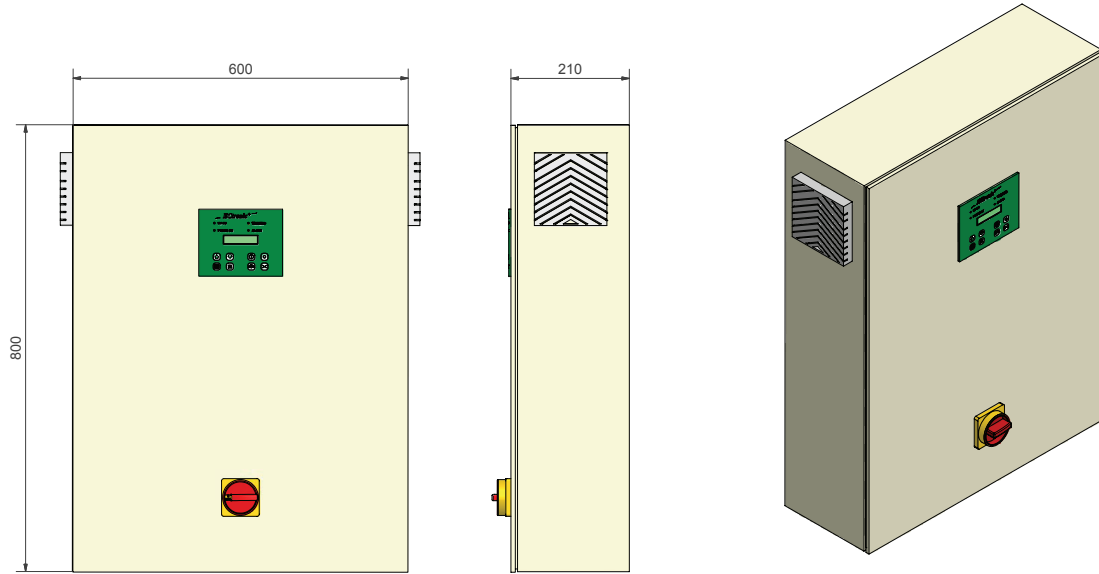
Technical Specifications bersonInLine 125 ST



Specifications:

• Material	:	SS 316L, according to AISI	
• Internal finish	:	Ra _{max} 0.8 µm	
• Connections	:	NW125 DIN2576 PN10	- 5" ANSI 150 lbs.
• Degree of protection	:	IP 54	- NEMA12
• Dimensions H x W x D	:	See layout drawing	
• Weight dry	:	52 kg	- 115 lbs.
• Weight wet	:	62 kg	- 137 lbs.
• Lamp type	:	B410 bersonMultiWave®	
• Number of lamps	:	4	
• PT100	:	Yes	
• UV-sensor	:	Yes, type UVector MPI	
• Manual cleaning	:		
• Drain tap	:	Yes	
• Air relieve valve	:	Yes	
• Nominal pressure	:	10 bar	- 145 PSI
• Test pressure	:	15 bar (30 minutes)	- 218 PSI

Technical Specifications bersonInLine 125 ST



Specifications:

• Material	: Painted steel		
• Colour	: RAL 7032		
• Degree of protection	: IP 54	-	NEMA12
• Dimensions H x W x D	: 800 x 600 x 210mm	-	31.5 x 23.6 x 8.3 in.
• Weight	: 40 kg	-	88 lbs.
• Cable Cabinet - Chamber	: 5m	-	16.4 ft.

Electric:

• Voltage	: 230V, 1L+N	-	230V 1L
• Frequency (Hz)	: 50	-	60
• Connected power	: 1.6 kW (±5%)		
• Safety door switch	: Yes		
• EC-tronic ^{II} control system	: Yes		

Options:

• Stainless steel cabinet SS304	: 800 x 600 x 300mm	-	31.5 x 23.6 x 15.7 in.
• Different voltage (check berson for available alternatives)			

Layout drawing BersonInLine® 125

