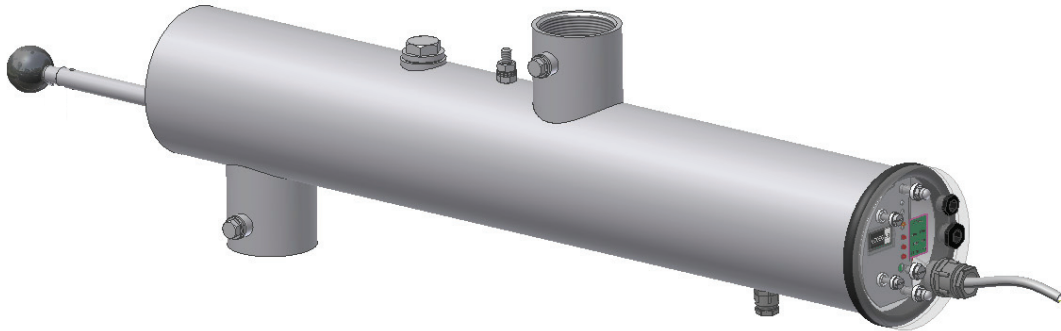


## Technical Specifications StreamLine 3500



### Specifications:

• Material	:	SS 316L, according to AISI		
• Internal finish	:	$Ra_{max} 0.8 \mu m$		
• Connections	:	2" BSP DIN2986 PN7		
• Degree of protection	:	IP 54		
• Dimensions H x W x D	:	See layout drawing		
• Weight dry	:	5 kg	-	11 lbs.
• Weight wet	:	9 kg	-	20 lbs.
• Lamp type	:	B40 VIK (one side connected)		
• Number of lamps	:	1		
• Nominal pressure	:	7 bar	-	102 PSI
• Test pressure	:	10 bar (30 minutes)	-	145 PSI

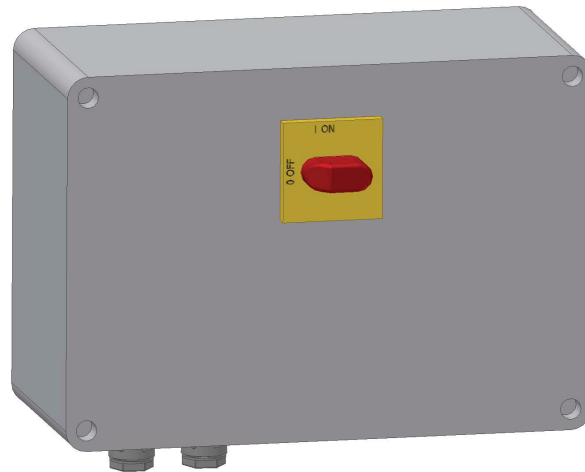
### Options:

• Manual cleaning	:	see datasheet Manual Cleaning Mechanism
• UV sensor	:	see datasheet UV-sensor 4S

### Customer specified items (CSI):

- Sample taps
- Tri-clamp connection
- 2" NPT connection

## Technical Specifications StreamLine 3500



### Specifications:

• Material	: Polycarbonate		
• Colour	: Grey		
• Degree of protection	: IP 54		
• Dimensions H x W x D	: 180 x 254 x 111 mm	-	7.1 x 10.0 x 4.4 in.
• Weight	: 2 kg	-	4 lbs.
• Cable Cabinet - Chamber	: 2.5m	-	8.2 ft.

### Electric:

• Voltage	: 230V, 1L+N	-	230V 2L
• Frequency	: 50 Hz	-	60 Hz
• Connected power	: 40 W (±10%)		
• StreamLine control system	: Yes (see datasheet StreamLine control system)		

### Options:

- EC-tronic<sup>II</sup> control system
- Different voltage (check berson for avaialable alternatives)

## Layout drawing StreamLine 3500

