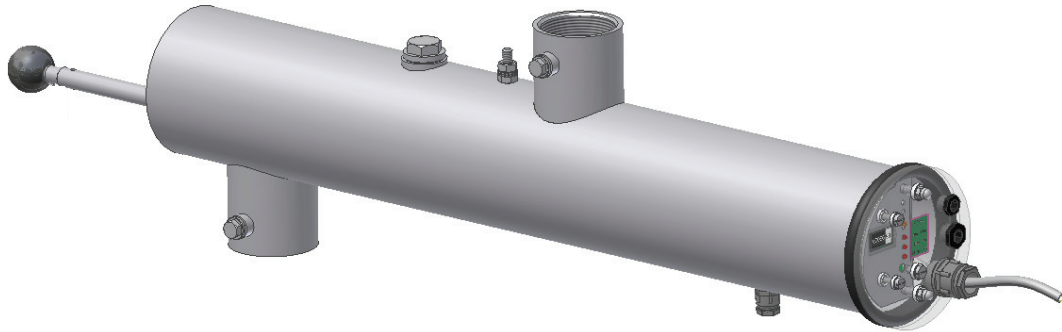


## Technical Specifications StreamLine 2000



### Specifications:

• Material	:	SS 316L, according to AISI		
• Internal finish	:	Ra <sub>max</sub> 0.8 µm		
• Connections	:	2" BSP DIN2986 PN7		
• Degree of protection	:	IP 54		
• Dimensions H x W x D	:	See layout drawing		
• Weight dry	:	5 kg	-	11 lbs.
• Weight wet	:	9 kg	-	20 lbs.
• Lamp type	:	B20 VI (one side connected)		
• Number of lamps	:	1		
• Nominal pressure	:	7 bar	-	102 PSI
• Test pressure	:	10 bar (30 minutes)	-	145 PSI

### Options:

• Manual cleaning	:	see datasheet Manual Cleaning Mechanism
• UV sensor	:	see datasheet UV-sensor 4S

### Customer specified items (CSI):

- Sample taps
- Tri-clamp connection
- 2" NPT connection

## Technical Specifications StreamLine 2000



### Specifications:

• Material	: Polycarbonate		
• Colour	: Grey		
• Degree of protection	: IP 54		
• Dimensions H x W x D	: 180 x 254 x 111 mm	-	7.1 x 10.0 x 4.4 in.
• Weight	: 2 kg	-	4 lbs.
• Cable Cabinet - Chamber	: 2.5m	-	8.2 ft.

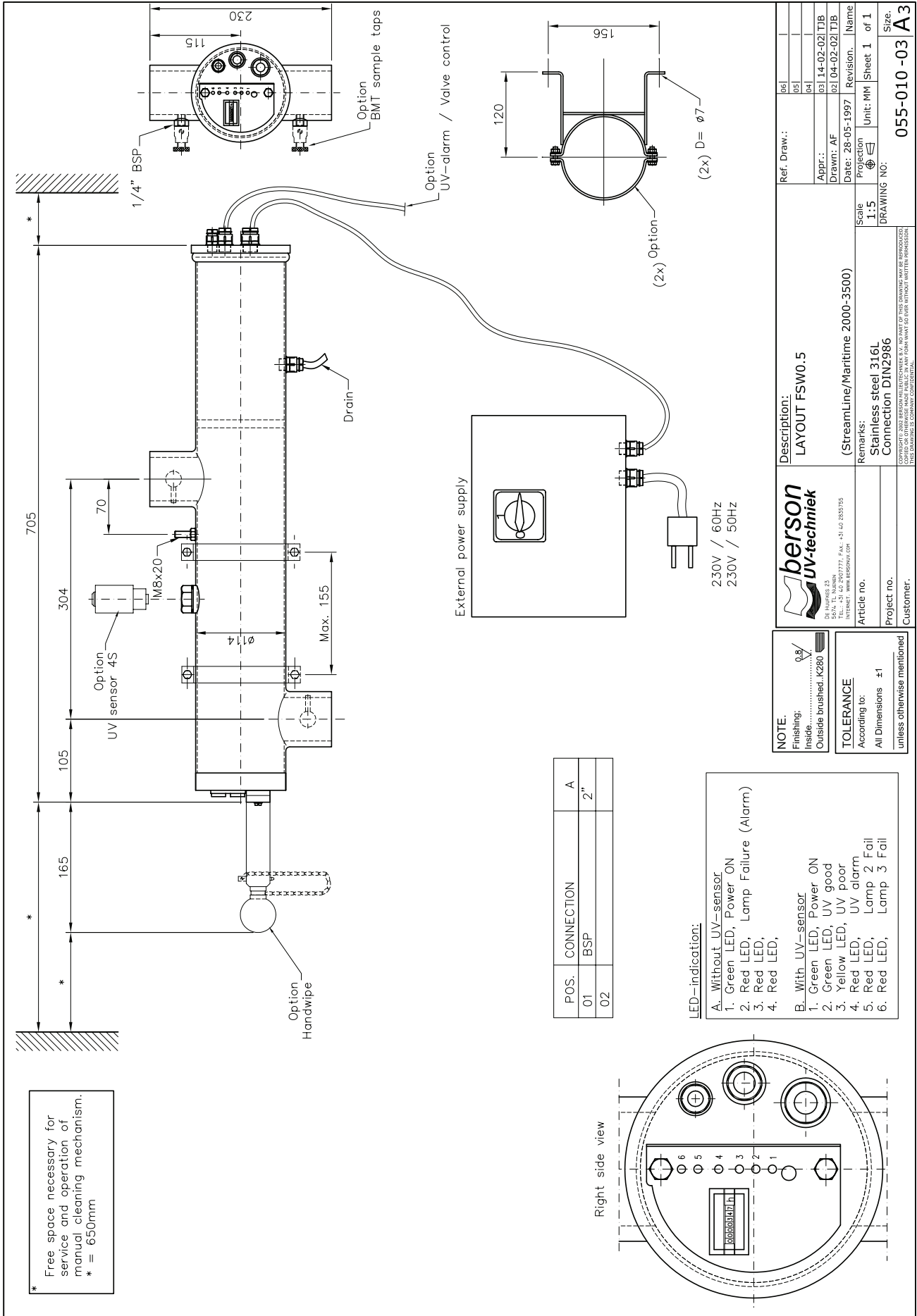
### Electric:

• Voltage	: 230V, 1L+N	-	230V 2L
• Frequency	: 50 Hz	-	60 Hz
• Connected power	: 30 W (±10%)		
• StreamLine control system	: Yes (see datasheet StreamLine control system)		

### Options:

- EC-tronic<sup>II</sup> control system
- Different voltage (check person for available alternatives)

## Layout drawing StreamLine 2000



\* Free space necessary for service and operation of manual cleaning mechanism.  
\* = 650mm

POS.	CONNECTION	A
01	BSP	2"
02		

LED—indication:

**A. Without UV-sensor**

1. Green LED, Power ON
2. Red LED, Lamp Failure (Alarm)
3. Red LED,
4. Red LED,

**B. With UV-sensor**

1. Green LED, Power ON
2. Green LED, UV good
3. Yellow LED, UV poor
4. Red LED, UV alarm
5. Red LED, Lamp 2 Fail
6. Red LED, Lamp 3 Fail

**NOTE.**

Finishing:  
Inside.....  
Outside brushed. K280

**TOLERANCE**  
According to:  
All Dimensions ±1  
unless otherwise mentioned

**berson uv-technik**  
D: HUPPES 23  
TEL.: +31 40 2907777, FAX.: +31 40 2935755  
INTERNET: WWW.BERSON.COM

Article no.  
Project no.  
Customer.

Description:  
**LAYOUT FSW0.5**  
(StreamLine/Maritime 2000-3500)  
Remarks:  
Stainless steel 316L  
Connection DIN2986

Ref. Draw.:  
Appr.: AF  
Drawn: AF  
Date: 28-05-1997  
Revision: 01  
Name  
Scale  
Projection  
Unit: MM  
Sheet 1 of 1  
Size  
DRAWING NO.: 055-010-03 A3