

## Technical Specifications StreamLine 100000



### Specifications:

• Material	:	SS 316L, according to AISI	
• Internal finish	:	Ra <sub>max</sub> 0.8 µm	
• Connections	:	3" BSP DIN2986 PN7	
• Degree of protection	:	IP 54	
• Dimensions H x W x D	:	See layout drawing	
• Weight dry	:	35 kg	- 77 lbs.
• Weight wet	:	60 kg	- 132 lbs.
• Lamp type	:	B160 VIK (one side connected)	
• Number of lamps	:	3	
• Nominal pressure	:	7 bar	- 102 PSI
• Test pressure	:	10 bar (30 minutes)	- 145 PSI

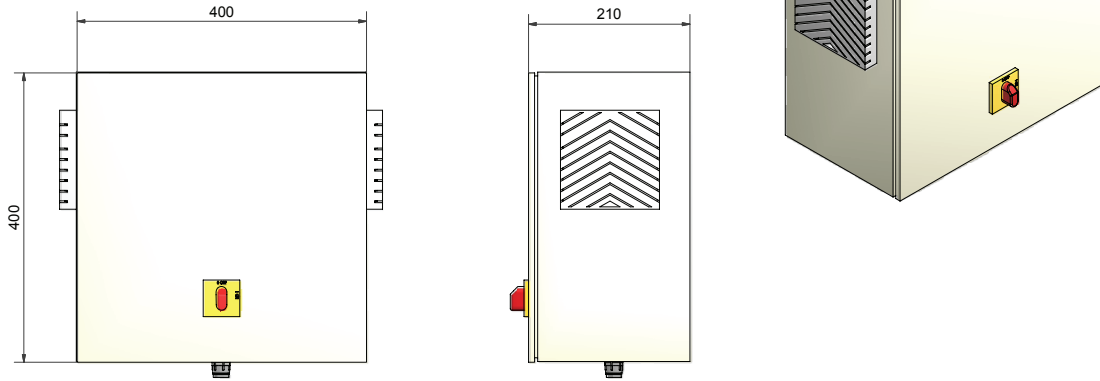
### Options:

• Manual cleaning	:	see datasheet Manual Cleaning Mechanism
• UV sensor	:	see datasheet UV-sensor 4S

### Customer specified items (CSI):

- Sample taps
- Tri-clamp connection
- 3" NPT connection
- Material SS 316TI

## Technical Specifications StreamLine 100000



### Specifications:

• Material	: Painted steel		
• Colour	: RAL 7032		
• Degree of protection	: IP 54		
• Dimensions H x W x D	: 400 x 400 x 210 mm	-	15,7 x 15,7 x 8,3 in.
• Weight	: 6 kg	-	13 lbs.
• Cable Cabinet - Chamber	: 2.5 m	-	8.2 ft.

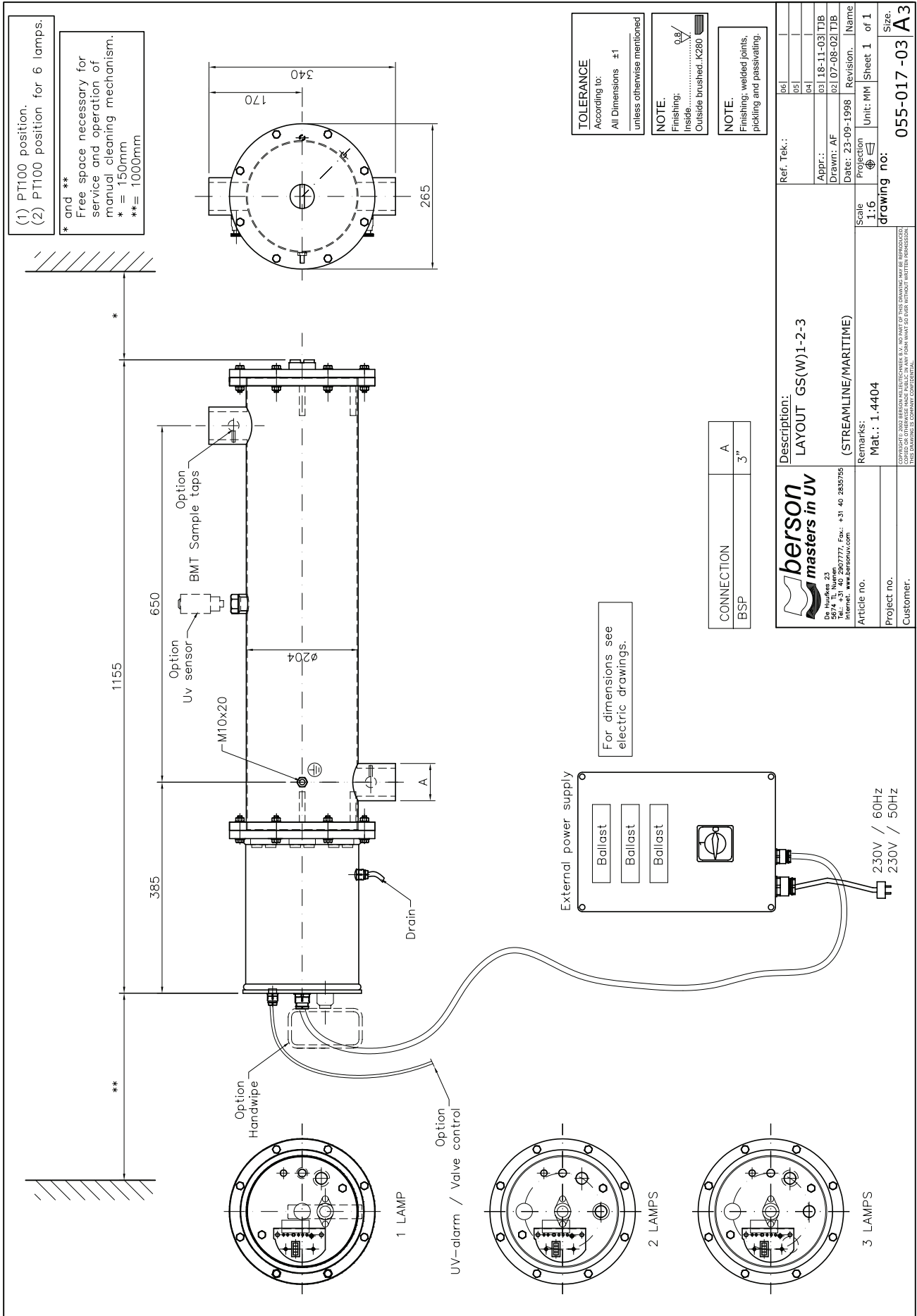
### Electric:

• Voltage	: 230V, 1L+N	-	230V 2L
• Frequency (Hz)	: 50 Hz	-	60 Hz
• Connected power	: 410 W (±10%)		
• StreamLine control system	: Yes (see datasheet StreamLine control system)		

### Options:

- Different voltage (check person for available alternatives)

## Layout drawing StreamLine 10000



(1) PT100 position.  
 (2) PT100 position for 6 lamps.  
 \* and \*\*  
 Free space necessary for service and operation of manual cleaning mechanism.  
 \* = 150mm  
 \*\* = 1000mm

**TOLERANCE**  
 According to:  
 All Dimensions ±1  
 unless otherwise mentioned

**NOTE:**  
 Finishing:  
 Inside ..... 0,8/  
 Outside brushed, K280

**NOTE:**  
 Finishing: welded joints, pickling and passivating.

CONNECTION	A
BSP	3"

**berson**  
*masters in uv*

Druck: 05  
 56741, 11, Neuen  
 Tel.: +31 40 2807777, Fax: +31 40 2835755  
 Internet: www.berson.com

Article no.  
 Project no.

Customer.

Description:  
 LAYOUT GS(W)1-2-3  
 (STREAMLINE/MARITIME)

Remarks:  
 Mat.: 1.4404

Scale  
 1:1.6

Projection  
 1st angle

Ref. Tek.:  
 06  
 05  
 04

Appr.:  
 03 | 18-11-03 | TJB

Drawn: AF  
 02 | 07-08-02 | TJB

Date: 23-09-1998  
 Revision: | Name

Unit: MM Sheet 1 of 1  
 drawing no:  
 055-017-03  
 Size: A3

COPYRIGHT © 2002 BERSON NELLECHNIEK B.V. NO PART OF THIS DRAWING MAY BE REPRODUCED, STORED IN A RETRIEVING SYSTEM, TRANSMITTED, OR OTHERWISE MADE PUBLIC IN ANY FORM OR BY ANY MEANS WITHOUT WRITTEN PERMISSION FROM BERSON NELLECHNIEK B.V. THIS DRAWING IS THE COMPANY CONFIDENTIAL.