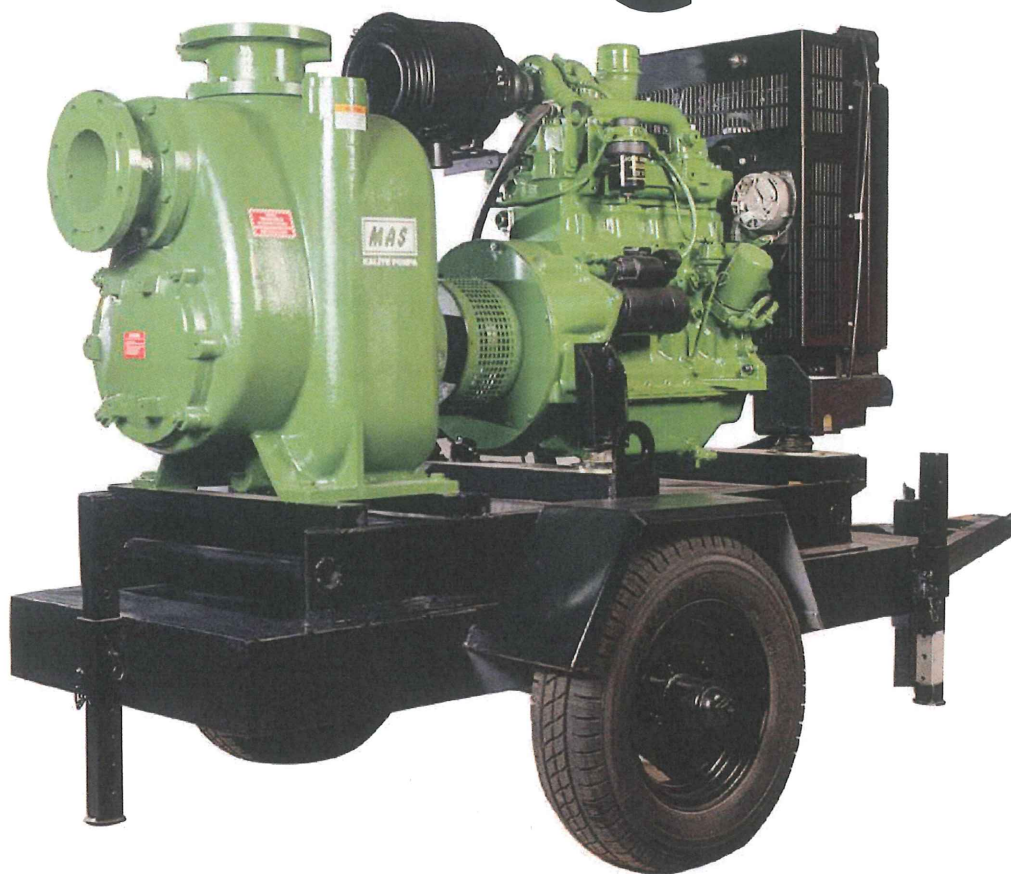


MAS UKM-S Series

# self priming centrifugal pumps

## UKM-S



### UKM-S Series

- For dewatering and sewage applications.
- Handling spherical solids 45 to 100 mm.
- Capacity up to 800 m<sup>3</sup>/h - Total Head up to 40 m.

**DFR** Systems srl

Str. Drumul Taberei 46,  
Bl. OS 2, Ap. 23  
București, Sector 6  
Tel / Fax: 021.413.40.91  
021.413.14.39  
Tel: 0744.30.14.31  
E-mail: [dfr@dfr.ro](mailto:dfr@dfr.ro)  
[info@dfr.ro](mailto:info@dfr.ro)  
[www.dfr.ro](http://www.dfr.ro)

**MAS Pompa Sanayi A.S.**

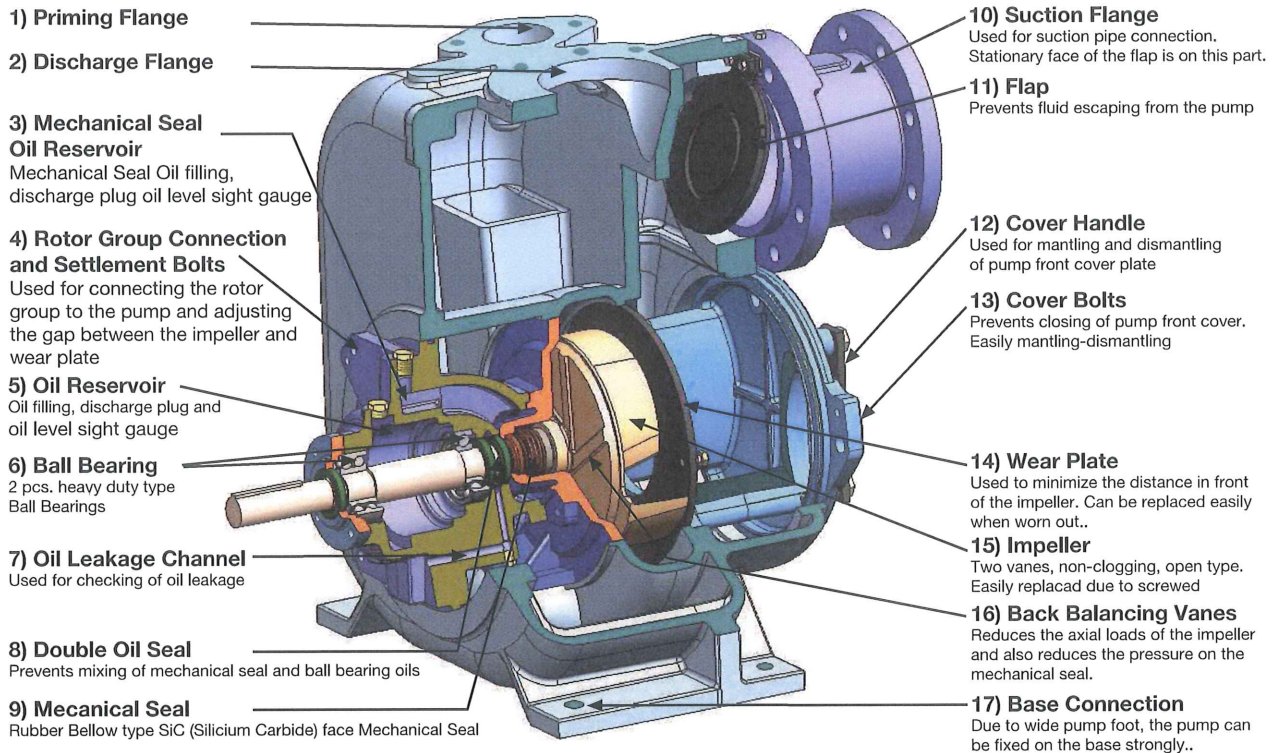
Head Office: Atasehir Bulvarı, Ata Carsi K:4 No:59  
34758 Atasehir - ISTANBUL / TÜRKİYE  
Tel.: +90 216 456 12 00 Fax: +90 216 456 25 00  
e-mail: [masgrup@masgrup.com](mailto:masgrup@masgrup.com)  
[http : //www.masgrup.com](http://www.masgrup.com)



MASS POMPAS

# general specifications

## Desing



## Material

**Casing and bearing housing etc.:** High Quality Grey Cast Iron / Ductileiron / GGG 40.3

**Impeller :** Open type - two vane - solids handling up to 100 mm - Grey Cast Iron, / stainless steel / Bronze

**Wear-plate replaceable :** Grey cast iron, / stainless steel Ductile iron / Hard steel

**Radial bearing :** Single Ball

**Thrust bearing :** Angular contact - double ball

**Mechanical seal :** Tungsten Carbide to Tungsten Carbide - Grease lubricated.

## performance range

