



**Pentair**

Pentair Residential Filtration, LLC

**POLY GLASS & COMPOSITE  
TANK AND ACCESSORIES**





# Pentair

Pentair Residential Filtration, LLC

## ► About Pentair

Pentair ([www.pentair.com](http://www.pentair.com)) is a diversified operating company headquartered in Minneapolis, Minnesota. Its Water Group is a global leader in providing innovative products and systems used worldwide in the movement, treatment, storage and enjoyment of water. Pentair has more than 50 branch offices in the whole world, and approximately 14000 employs worldwide. With 2008 revenues of \$3.35 billion

As a professional manufacture of FRP pressure vessels Pentair has more than 50 years manufacture experiences. Owing STRUCTRAL,PARK famous brands. IN 2009 after acquired Pentair Jieming, Pentair established Beijing Pentair Environmental Protection Equipment CO,LTD producing PENTAIR and PARK brand pressure tanks.

## ► About Beijing Pentair environmental protection equipment CO,LTD

Beijing Pentair Environmental Protection Equipment CO,LTD is a wholly-owned subsidiary belonging to Pentair Water Group; focus on manufacturing FRP pressure vessels, disc filters, multiport-valve & control systems and other water treatment equipment accessories. Nowadays, we are able to produce 200,000 pieces of FRP pressure tanks annually and reach the international advanced level in products quality. The production of disc filter and multiport-valve & control system even fill the product gap in domestic market.

We have taken the lead in acquiring ISO9001/IQ NET authentication for quality management in water treatment industry.



## ► The pressure vessels brands in pentair



(100psi&150psi)



(150psi)



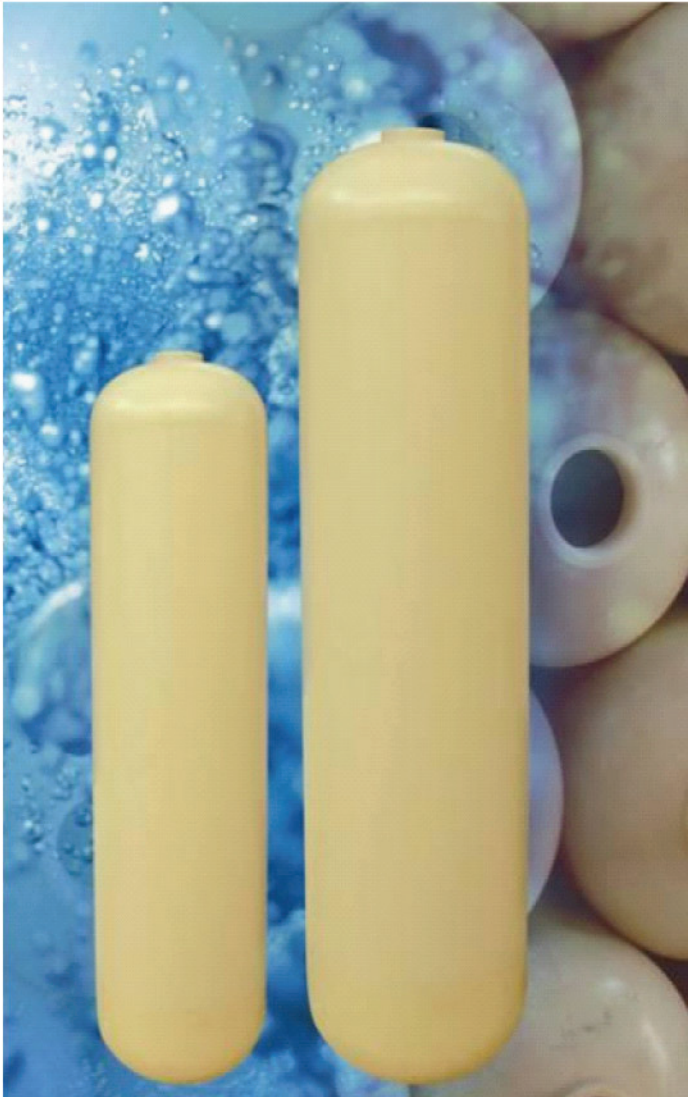
(150psi)



## ► Sales network



## ABS liner pressure tanks 7"-21"



**Developing continually,  
producing high-quality products with market  
competitiveness at worldwide rang.**

Dedicated to producing pressure tanks for decades, serving both residential and commercial applications. Our exclusive manufacturing process utilizing techniques similar to the Pentair PARK brand provides for a high quality products with world class performance.



**Failure in normal use due to products defect,  
can be replaced free ofcharge within three years  
from the date of manufacturing.**

### ► Structure and material

- Inner shell of ABS
- Continuous of strands of fiberglass with high strength resin
- Base material: —7"-16" PP plastic  
—18"-21" FRP compress

### ► Product features

- Completely rust and corrosion resistance
- ABS inner was blow molded, sealess, one-pices
- High strength and light weight
- Easy transportation and installation

### ► Operating parameters

- Maximum operating pressure: 150Psi
- Maximum operating temperature : 49℃ (120°F)
- Maximum vacuum : 127mmHg (5"Hg)
- Storage temperature >-27℃

### ► Design parameters

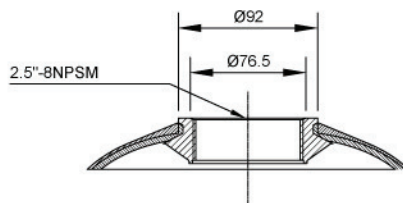
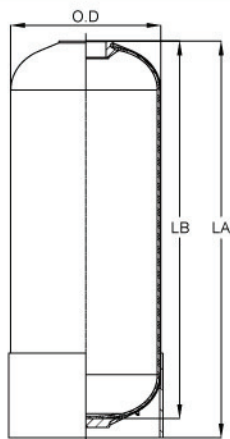
- Safety factor : 4:1
- Minimum burst pressure: 600Psi
- Test up to 100,000 cycles without leakage



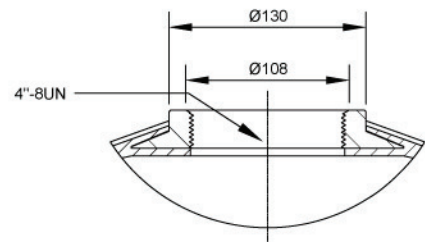
# ABS liner pressure tanks 7"-21"

NO.	Tank Size		Volume		Opening		Dimensions			Base
	Inch	mm	Litres	Gallon	TOP	BOTTOM	LA mm	LB mm	O.D mm	
1	7×13	φ180×335	6.3	1.7	2.5"NPSM	/	334	320	181	standard
2	7×17	φ180×430	8.6	2.3	2.5"NPSM	/	428	414	181	standard
3	7×35	φ180×905	20.1	5.3	2.5"NPSM	/	904	890	181	standard
4	7×44	φ180×1130	25.6	6.8	2.5"NPSM	/	1132	1118	181	standard
5	8×13	φ205×335	7.9	2.1	2.5"NPSM	/	335	321	206	standard
6	8×17	φ205×445	11.3	3.0	2.5"NPSM	/	446	432	206	standard
7	8×35	φ205×905	24.0	6.3	2.5"NPSM	/	905	891	206	standard
8	8×44	φ205×1130	32.5	8.6	2.5"NPSM	/	1131	1117	206	standard
9	9×17	φ230×430	13.3	3.5	2.5"NPSM	/	427	413	232	standard
10	9×35	φ230×905	32.0	8.4	2.5"NPSM	/	905	891	232	standard
11	9×42	φ230×1085	39.0	10.3	2.5"NPSM	/	1085	1071	232	standard
12	9×48	φ230×1230	44.7	11.8	2.5"NPSM	/	1232	1218	232	standard
13	10×17	φ255×445	17.8	4.7	2.5"NPSM	/	447	433	257	standard
14	10×35	φ255×905	38.6	10.2	2.5"NPSM	/	903	889	257	standard
15	10×44	φ255×1130	49.5	13.1	2.5"NPSM	/	1130	1116	257	standard
16	10×54	φ255×1390	61.9	16.3	2.5"NPSM	/	1390	1376	257	standard
17	12×48	φ300×1235	77.3	20.4	2.5"NPSM	/	1233	1223	305	standard
18	12×52	φ300×1340	84.8	22.4	2.5"NPSM	/	1342	1332	305	standard
19	12×65	φ300×1650	106.3	28.1	2.5"NPSM	/	1650	1640	305	standard
20	13×44	φ330×1140	82.9	21.9	2.5"NPSM	/	1142	1132	334	standard
21	13×54	φ330×1400	103.6	27.4	2.5"NPSM	/	1400	1390	334	standard
22	14×65	φ355×1670	145.6	38.5	2.5"NPSM	/	1671	1661	360	standard
23	14×65	φ355×1670	145.6	38.5	4"-8UN	/	1670	1661	360	standard
24	16×65	φ400×1670	187.7	49.6	2.5"NPSM	/	1672	1662	410	standard
25	16×65	φ400×1670	187.7	49.6	4"-8UN	/	1671	1662	410	standard
26	18×65	φ450×1670	237.0	62.6	4"-8UN	/	1670	1640	465	SMC
27	21×62	φ530×1730	312.0	82.4	4"-8UN	/	1730	1580	538	standard
28	21×62	φ530×2020	312.0	82.4	4"-8UN	4"-8UN	2020	1570	538	Tripod

Height tolerance is less than 0.25" Color options: Nature, Blue, Gray, Black



2.5"NPSM OPENING



4"-8UN OPENING



Up to 21" diameter tank with pressure rating at 150Psi is certified by WQA according to NSF/ANSI 44 standard

## FRP liner pressure tanks 24"-70"



### Careful, elaborate carefully, make gold products

FRP liner tanks with its excellent corrosion resistance performance and its high intensity, light weight characteristic, have been widely applied in light industry, chemical industry, electronics, petrochemical industry, pharmacy, food and so on each industry areas.



Failure in normal use due to products defect, can be replaced free ofcharge within three years from the date of manufacturing.

### ▶ Structure and material

- Inner shell of FRP
- Continuous of strands of fiberglass with high strength resin
- Base material: FRP

### ▶ Product features

- Composite fiberglass construction for corrosion resistance
- High strength and light weight
- Easy transportation and installation

### ▶ Operating parameters

- Maximum operating pressure: 150Psi
- Maximum operating temperature : 49°C (120°F)
- Maximum vacuum : 127mmHg (5"Hg)
- Storage temperature >-27°C

### ▶ Design parameters

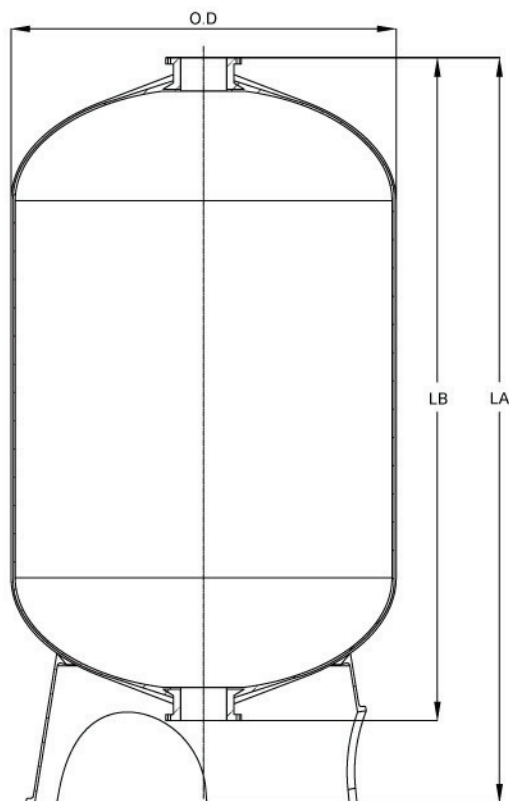
- Safety factor : 4:1
- Minimum burst pressure: 600Psi



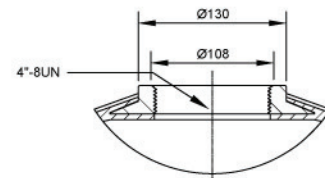
# FRP liner pressure tanks 24"-70"

NO.	Tank Size		Volume		Opening		Dimensions			Base
	Inch	mm	Litres	Gallon	TOP	BOTTOM	LA mm	LB mm	O.D mm	
1	24×72	φ600×1850	441	116.5	4"-8UN	\	1850	1750	612	Standard
2	24×72	φ600×1850	421	111.2	4"-8UN	4"-8UN	1850	1680	612	Tripod
3	24×77	φ600×1950	469	123.9	4"-8UN	\	1950	1850	612	Standard
4	24×87	φ600×2200	520	137.4	4"-8UN	6"-8UN	2200	2030	612	Tripod
5	30×72	φ750×1850	676	178.6	6"-8UN	\	1850	1750	765	Standard
6	30×72	φ750×1850	640	169.1	4"-8UN	4"-8UN	1850	1670	765	Tripod
7	30×77	φ750×1950	720	190.2	6"-8UN	\	1950	1850	765	Standard
8	30×87	φ750×2200	790	208.7	4"-8UN	6"-8UN	2200	2010	765	Tripod
9	36×72	φ900×1850	857	226.4	4"-8UN	4"-8UN	1850	1600	918	Tripod
10	36×94	φ900×2400	1207	318.9	6"-8UN	\	2400	2150	918	Standard
11	36×94	φ900×2400	1093	288.8	Flange	Flange	2400	2150	918	Tripod
12	40×72	φ1000×1850	1046	276.4	4"-8UN	4"-8UN	1850	1605	1020	Tripod
13	40×94	φ1000×2400	1478	390.5	6"-8UN	\	2400	2155	1020	Tripod
14	40×94	φ1000×2400	1332	351.9	Flange	Flange	2400	2150	1020	Tripod
15	48×72	φ1200×1850	1202	317.6	Flange	Flange	1850	1558	1224	Tripod
16	48×94	φ1200×2400	1824	481.9	Flange	Flange	2400	2108	1224	Tripod
17	60×83	φ1500×2100	2158	570.1	Flange	Flange	2100	1780	1530	Tripod
18	60×94	φ1500×2400	2688	710.2	Flange	Flange	2400	2080	1530	Tripod
19	70×94	φ1800×2400	3561	940.8	Flange	Flange	2400	2020	1836	Tripod

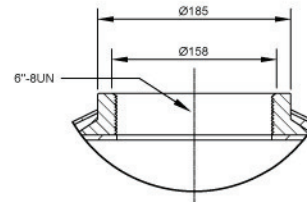
Height tolerance is less than 0.5" Color options: Nature, Blue



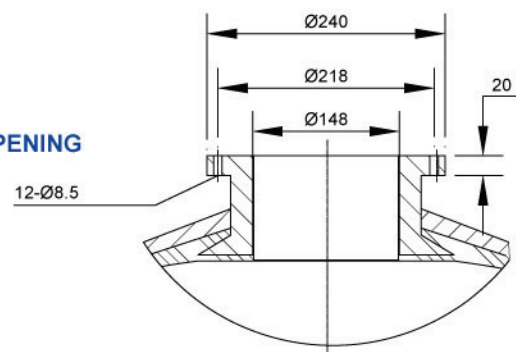
4"-8UN OPENING



6"-8UN OPENING



6"-FLA OPENING



# Distributor System

Part NO.	Description	Tank Opening	Tank Diameter	
			Inch	mm
<b>Top Mount Valve</b>				
<b>Top Distributor</b>				
2201	Top Distributor Basket, 1.05"	2.5"-NPSM	Up to 10"	Up to 250
2203	Top Diffuser, 1.2"	2.5"-NPSM	12"-16"	300-400
2205	Top Distributor Basket, Fleck	2.5"-NPSM	Up to 16"	Up to 400
5401	Top Diffuser, 1.2"	4"-8UN	16"-30"	400-750
5402	Top Diffuser, 1.5"	4"-8UN	16"-40"	400-1000
5601	Top Diffuser, 1.5"	6"-8UN	24"-36"	600-900
5602	Top Diffuser, 2"	6"-8UN	24"-48"	600-1200
<b>Bottom Distributor</b>				
2202	Bottom Basket, 1.05"	2.5"-NPSM	Up to 10"	Up to 250
2204	Bottom Diffuser, 1.2"	2.5"-NPSM	12"-16"	300-400
2206	Bottom Basket, Fleck	2.5"-NPSM	Up to 16"	Up to 400
6001	Bottom Diffuser, 1.2"		16"-30"	400-750
6002	Bottom Diffuser, 1.5"		16"-40"	400-1000
6003	Bottom Diffuser, 1.2"		14"-30"	350-750
6004	Bottom Diffuser, 1.5"		14"-40"	350-1000
6010	Bottom hub and lateral, 1.5" riser	4"-8UN	14"-16"	350-400
6011	Bottom hub and lateral, 1.5" riser	4"-8UN	18"	450
6012	Bottom hub and lateral, 1.5" riser	4"-8UN	20"-24"	500-600
6401	Bottom hub and lateral, 1.5" riser	4"-8UN	30"	750
6402	Bottom hub and lateral, 1.5" riser	4"-8UN	36"	900
6801	Bottom hub and lateral, 3" riser	6"-8UN	30"	750
6802	Bottom hub and lateral, 3" riser	6"-8UN	36"	900
6803	Bottom hub and lateral, 3" riser	6"-8UN	40"	1000
6804	Bottom hub and lateral, 3" riser	6"-8UN	48"	1200
6805	Bottom hub and lateral-16, 3" riser	6"-8UN	40"	1000
6806	Bottom hub and lateral-16, 3" riser	6"-8UN	48"	1200
<b>Side mount valve</b>				
<b>Top Distributor</b>				
7401	Top Diffuser, 2" socket	4"-8UN	14"-36"	350-900
7601	Top Diffuser, 2" socket	6"-8UN	30"-36"	750-900
7602	Top Diffuser, 3" socket	6"-8UN	40"-48"	1000-1200
7603	Top Diffuser, 4" socket	6"-8UN	40"-48"	1000-1200
7801	Top Diffuser, 3" FNPT	6" Flange	20"-48"	500-1200
7802	Top Diffuser-3, 3" FNPT	6" Flange	40"-48"	1000-1200
7803	Top Diffuser, 3" FNPT	6" Flange	36"	900
7804	Top Diffuser, 3" FNPT	6" Flange	40"-70"	1000-1800
<b>Bottom Distributor</b>				
8410	Bottom hub and lateral, 2" riser	4"-8UN	14"-16"	350-400
8411	Bottom hub and lateral, 2" riser	4"-8UN	18"-20"	450-500
8413	Bottom hub and lateral, 2" riser	4"-8UN	24"	600
8450	Bottom hub and lateral, 2" riser	4"-8UN	30"	750
8451	Bottom hub and lateral, 2" riser	4"-8UN	36"	900
8613	Bottom hub and lateral, 2" riser	6"-8UN	24"	600
8650	Bottom hub and lateral, 2" riser	6"-8UN	30"	750
8651	Bottom hub and lateral, 2" riser	6"-8UN	36"	900
8801	Bottom hub and lateral, 3" FNPT	6" Flange	20"-24"	500-600
8802	Bottom hub and lateral, 3" FNPT	6" Flange	30"	750
8803	Bottom hub and lateral, 3" FNPT	6" Flange	36"	900
8804	Bottom hub and lateral, 3" FNPT	6" Flange	40"	1000
8805	Bottom hub and lateral, 3" FNPT	6" Flange	48"	1200
8806	Bottom hub and lateral-16, 3" FNPT	6" Flange	60"	1500
8807	Bottom hub and lateral-16, 3" FNPT	6" Flange	70"	1800
<b>Accessory</b>				
1011	Nozzle			
1012	Nozzle			
1402	Thread 4"-8UN to 2.5NPSM Reducer			
1403	Thread 4"-8UN Closure			
1601	Thread 6"-8UN to 4"-8UN Reducer			
1602	Thread 6"-8UN Closure			
1801	Thread 6"-Flange Closure			
1802	Thread 4"-8UN to 6"-Flange Reducer			



## TYPE ILLUMINATION

ACCESSORY	1XXX
NOZZLE	2XXX
TOP MOUNT/TOP DISTRIBUTOR	5XXX
TOP MOUNT/BOTTOM DISTRIBUTOR	6XXX
SIDE MOUNT/TOP DISTRIBUTOR	7XXX
SIDE MOUNT/BOTTOM DISTRIBUTOR	8XXX

## THE SECOND DIGIT

2:	2.5"NPSM Opening
4:	4"— 8UN Opening
6:	6"— 8UN Opening
8:	6" Flange Opening